



Committed to people.  
Committed to the environment.



1

**COMPANY  
INTRODUCTION**

---



2

**R&D  
INTRODUCTION**



3

**MANUFACTURE  
INTRODUCTION**

# TIMELINE

ABOUT HAIWU

## 1995 Company Foundation

Focus on refrigeration equipment and engineering services.

Start our business in IDC&base station since 2003

## 2002 Integrated/Turn-key Solutions

Focus on offering integrated solution to customers in government, enterprise, healthcare, education and finance.

## 2006 Wide Recognition

Approved supplier of China Mobile, China Unicom, China Telecom and of several Central Government Procurement Offices.

Set 29 branches and 500+ service points in China

## 2011 Reaching Out

Establish a group, provincial and municipal three-level marketing system to get closer and enhance customer satisfaction.

## 2016 Haiwu Industrial Park

Improve core technology and expand production scale. Establish the Haiwu Industrial Park.

## 2021~ Digital Transformation

Adopt full range of digital system to enhance R&D, manufacturing, quality control system; establish digital foundation for future Haiwu Industrial 4.0.

# OVERVIEW

ABOUT HAIWU

**1** Consulting and Design Institute

**29** Branches

**500+** Service Points

**5000+** Authorized Engineers



**HEADQUARTERS**  
Beijing



**R&D AND MANUFACTURE**  
Guangdong . Dongguan

# R&D AND MANUFACTURE

ABOUT HAIWU



Building Square

**400,000m<sup>2</sup>**

Production Capacity

**\$1.5 Billion**

Employee

**1,700**

# FIRST

/TELECOMMUNICATION

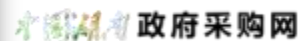
/DATA CENTER

/CLEAN ENERGY

**INDUSTRIAL CLUSTERS IN CHINA**

# MAIN CUSTOMERS

ABOUT HAIWU



Internet

Energy

Transportation

Telecom

Government

Financial

Education



1

COMPANY  
INTRODUCTION



2

R&D  
INTRODUCTION



3

MANUFACTURE  
INTRODUCTION

# C&D INSTITUTE | FULL LIFE CYCLE MANAGEMENT





# C&D INSTITUTE CONSULTING & DESIGN

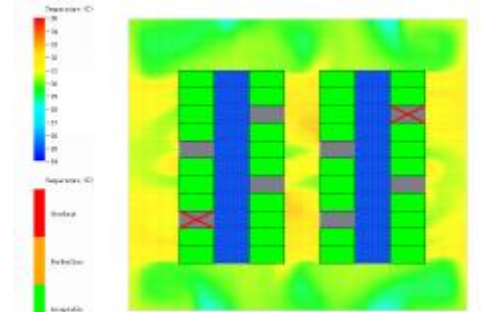
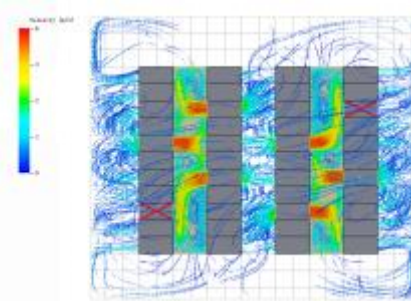
CORE COMPETENCES

Electromechanical  
Prefabrication

Immersive BIM Design

CFD Simulation

System Diagnosis  
Optimization



# EXPERIENCED R&D TEAM

RIGHT PARTNER



**5%**

Annual Sales  
Revenue on R&D



**200+**

Experienced R&D engineers,  
20%>10Years, 10%>20Years



PhDs **2%**

Masters **30%**

Undergraduates **50%**

- Quick response and support on technical questions.
- Quick development of customized solutions.

# NATIONAL CERTIFIED LABORATORY

RIGHT PARTNER



CHINA NATIONAL ACCREDITED LABORATORY

One of the best accredited laboratories in the industry, working in full compliance with GB and IEC Standard requirements for sound and performances management and testing systems.

**Testing results are recognized by local authorities  
in 65 countries and regions.**

# 100% FACTORY TEST ON ASSEMBLY LINE

RIGHT PARTNER



Noise Level Lab



Performance Lab



PCB Aging Test Lab



Test Online

➤ It make sure that all product could be one-step tests for customers.



1

**COMPANY  
INTRODUCTION**



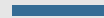
2

**R&D  
INTRODUCTION**



3

**MANUFACTURE  
INTRODUCTION**



# R&D AND MANUFACTURING

CORE COMPETENCES



**Heat Exchanger Workshop**

**Complete Set Of Heat Exchanger Producing Equipment  
100% Self-made**



**Fin Punching Machine**



**Pipe Feeder And Pipe Bender**



**Degrease Dryer**



**Auto-welding Machine**



**Helium Detector**




**R&D AND MANUFACTURING**  
CORE COMPETENCES


**Sheet Metal Workshop**




**AMADA Facilities**



**Laser cutting machine**  
Accuracy: 0.002mm



**Numerical control press**



**Bending machine**

# R&D AND MANUFACTURING

CORE COMPETENCES

**Painting Workshop**



**WAGNER**

**Automatic Anti-static Spraying Line**

**7 Processes/ 360° Powder Spraying**



# R&D AND MANUFACTURING

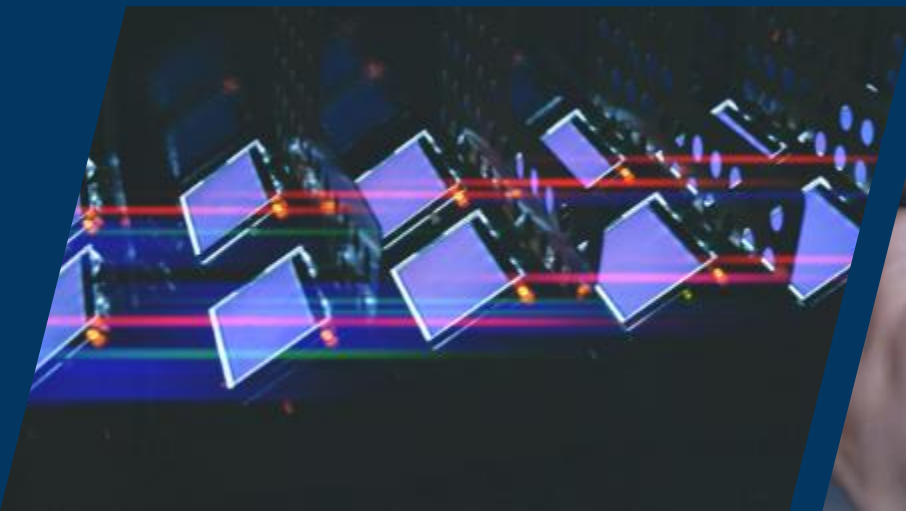
CORE COMPETENCES



**Electric Board  
Assembly Workshop**



**PCBA Aging Test | E-box Wiring**



# R&D AND MANUFACTURING

CORE COMPETENCES



Products Assembly Workshop

The Product Manufacturing Capacity >1,000,000 Pcs/Year  
Fully Automatic Production Line | CNC Commodity Inspection Room





*Committed to people. Committed to the environment.*

[www.haiwu.com](http://www.haiwu.com)